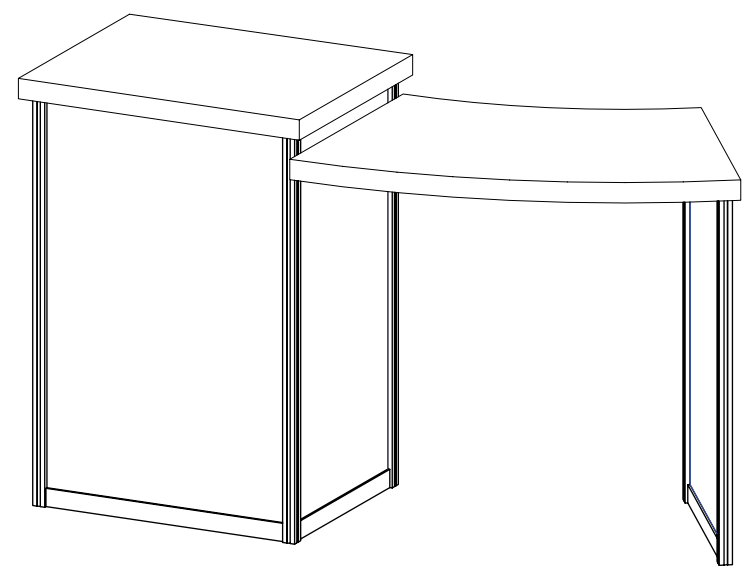
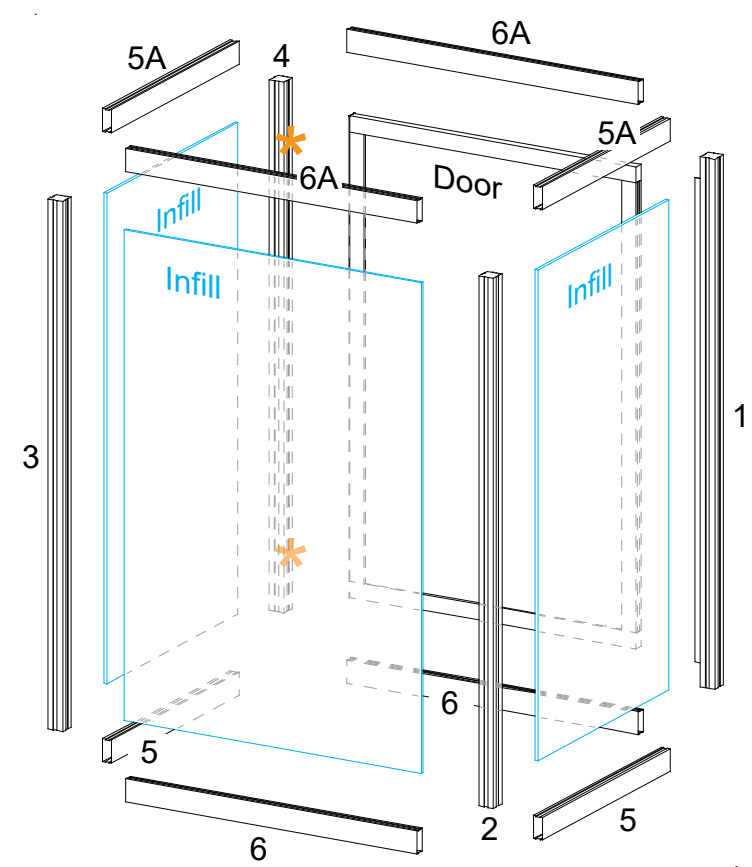
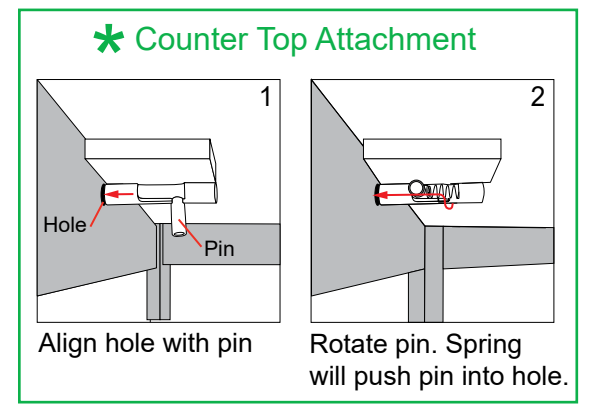
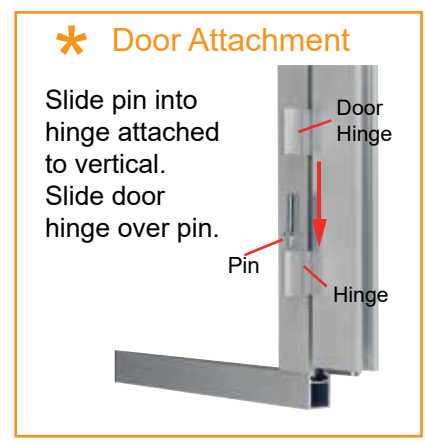


Item	Qty.	Description
1	1	41.529" S40 Vertical Extrusion
2	1	41.529" S40 Vertical Extrusion
3	1	41.529" S40 Vertical Extrusion
4	1	41.529" S40 Vertical Extrusion
5/5A	2/2	19" Z45 Horizontal Extrusion
6/6A	2/2	25" Z45 Horizontal Extrusion
7	1	37.529" S40 Vertical Extrusion
8	1	37.529" S40 Vertical Extrusion
9/9A	1/1	19" Z45 Horizontal Extrusion
10	1	28.123" Curved Extrusion
11	1	40.828" Curved Extrusion

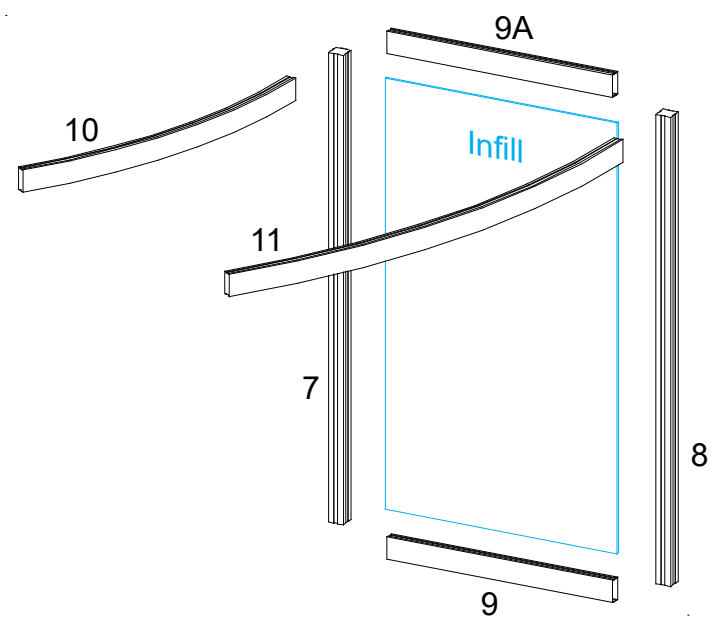
- Steps:
- 1) Connect verticals [1] [2] [3] & [4] with horizontals [5] and [6].
 - 2) Insert infills between verticals [1 & 2] [2 & 3] and [3 & 4] then secure with horizontals [5A] and [6A].
 - 3) Attach door to vertical [4]. See **Door Attachment** detail.
 - 4) Connect verticals [7] and [8] together with horizontal [9].
 - 5) Insert infill between verticals [7] and [8] then secure with horizontal [9A].
 - 6) Attach assembled counter extension to assembled counter base.
 - 7) Connect Velcro on shelf supports to infills then place shelf on top.
 - 8) Place counter tops onto assembled counter bases then lock pins into holes of horizontals [5A]. See **Counter Top Attachment** detail.



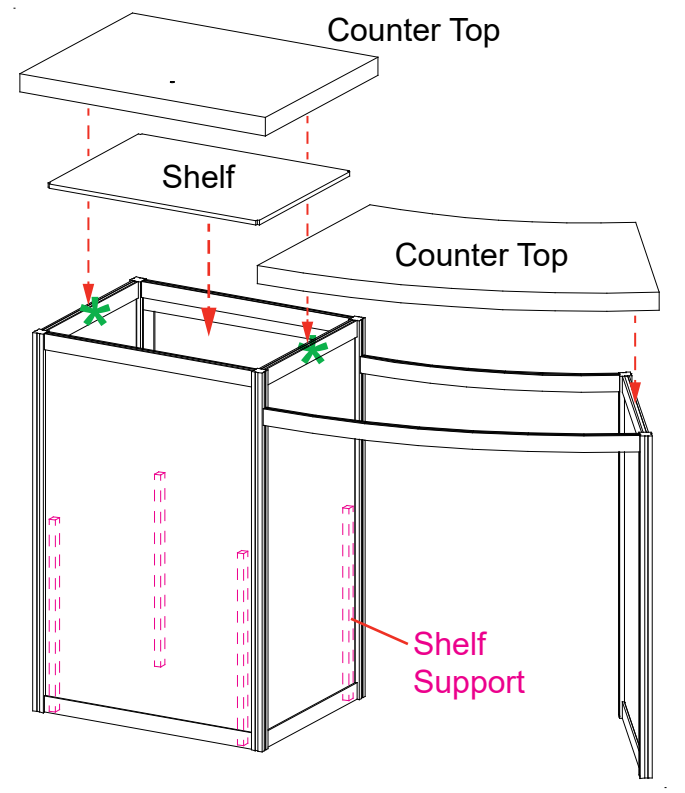
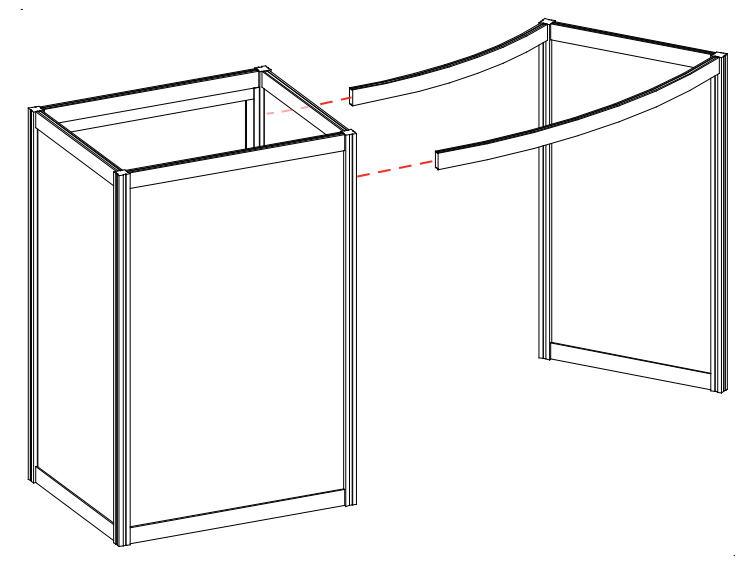
Completed Assembly



Counter Base Assembly



Counter Extension Assembly



SETUP INSTRUCTIONS

General Setup Instructions

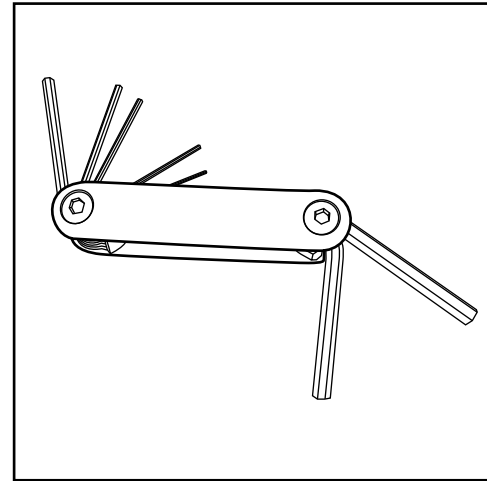
- Read entire setup instruction manual prior to unpacking parts and pieces.
- The setup instructions are created specifically for this configuration.
- Setup instructions are laid out sequentially in steps, including exploded views with detailed explanation for assembly.

Cleaning & Packing

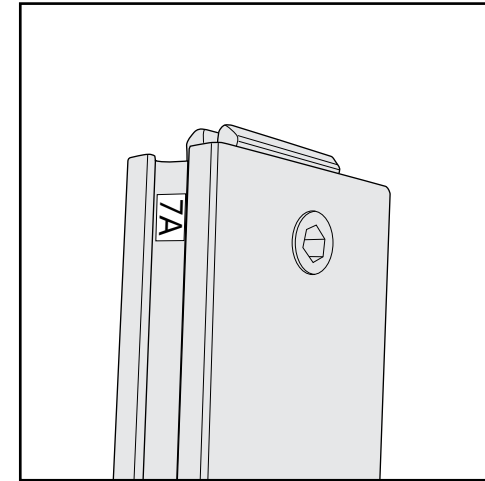
- For Cleaning Metal, Plex, & Laminate Parts: Use a **MILD NON-ABRASIVE** cleanser and soft cloth/paper towel to clean all surfaces.
- Keep exhibit components away from heat and prolonged sun exposure. **Heat and UV exposure will warp and fade components.**
- Retain all provided Packing Materials. All provided packing materials are for ease of repacking & component protection.

Disassembly

- For loss prevention, tighten all set screws and locks during disassembly.



Hex Tool - Essential for Assembly



Part Identification - Numbering



Spline Connection



Base Plate & Extrusion Connection



Extrusion & Lock Connection



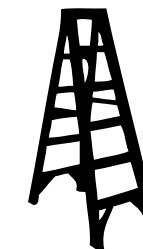
Engaged Lock



WARNING



DO NOT USE POWER TOOLS



LADDERS OR LIFTS
MAY BE REQUIRED



ALL CONNECTIONS MUST
BE TIGHTLY SECURED

CRATE PACKING